



## Power points

**1.**  
Q: If a power point is cracked or damaged, should you use it?  
a) Yes b) No

b) No. Don't use a damaged power point. It could be dangerous! Tell your parents or a teacher.

**2.**  
Q: Should the power be on or off when you plug in an electrical appliance?  
a) On b) Off

b) Off. Turn off the power before you plug in or unplug an appliance.

**3.**  
Q: If your phone charger is damaged, should you still use it?  
a) Yes b) No

b) No. Don't use a damaged charger. It could be dangerous! Tell an adult.



## Mobile

**4.**  
Q: Should you use plug-in electrical equipment while in water?  
a) Yes b) No

b) No. Electricity and water can be very dangerous. You should never use any plug-in electrical equipment while you are in water.

All of the above. Don't be scared - the power will be back on soon.

**8.**  
Q: If you lose power in a storm, what should you do?  
a) Turn off electrical appliances  
b) Stay inside and play cards  
c) Use a torch

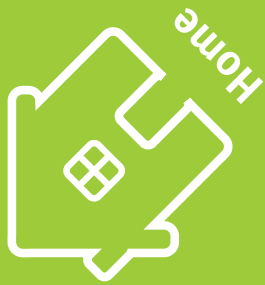
b) Tell an adult as this could be very dangerous. They will need to get an electrician to check if the appliance or power point is safe.

**5.**  
Q: If you feel an electric shock when or power touch an appliance should you do?  
a) Don't worry  
b) Tell an adult

a) No. Electrical power cords can be dangerous. They should never be played with even if they are not plugged in.

a) Yes. It is safer to turn things off, and you won't waste power.

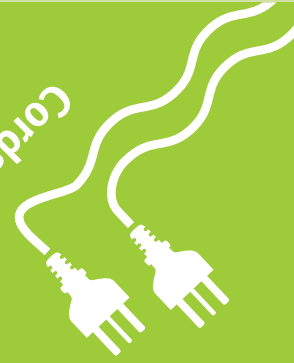
**7.**  
Q: When you leave the house should you turn off the lights and fans?  
a) Yes b) No



## Home

**6.**  
Q: Should you let little kids play with power cords?  
a) No b) Yes

## Cords



Department of Education  
Office of Industrial Relations

### How to make your chatterbox

- Cut along the black dotted line to remove the chatterbox from the page.
- Place face down and fold outer corners into the centre of the chatterbox so you are left with a square shape.
- Turn over so that the answers are facing up.
- Fold each tip into the centre so that you are left with a square fold with the questions facing up.
- Turn over so that the pictures are facing up.
- Fold in half vertically to create a crease.
- Open back up to the square shape.
- Fold in half horizontally to create a crease.
- Use your thumbs and forefingers to form a peak underneath the pictures.
- Now you are ready to play!
- Use your fingers to shift the game in and out to expose the inside panels.
- Now pick a picture or word from one of the corners. As you spell out the name of the picture/word, move the picture in and out.
- Pick a question from the inside of the game and choose an answer. Open to find out if you answered correctly!

